



Cassilis Road, London, E14 9LL

Generous two bedroom two bathroom apartment in the heart of Canary Wharf. The property boasts a spacious living room leading into the private balcony, a modern kitchen, a family bathroom, and two very good sized double bedrooms (one of which with its own bathroom). The apartment is conveniently located moments from the financial district and a plethora of local amenities.

Council Tax Band: F

- Two double bedrooms
- Two Bathrooms
- Gym & Swimming Pool
- Concierge
- Plethora of Local Amenities Nearby
- Generous Apartment
- Prime Location

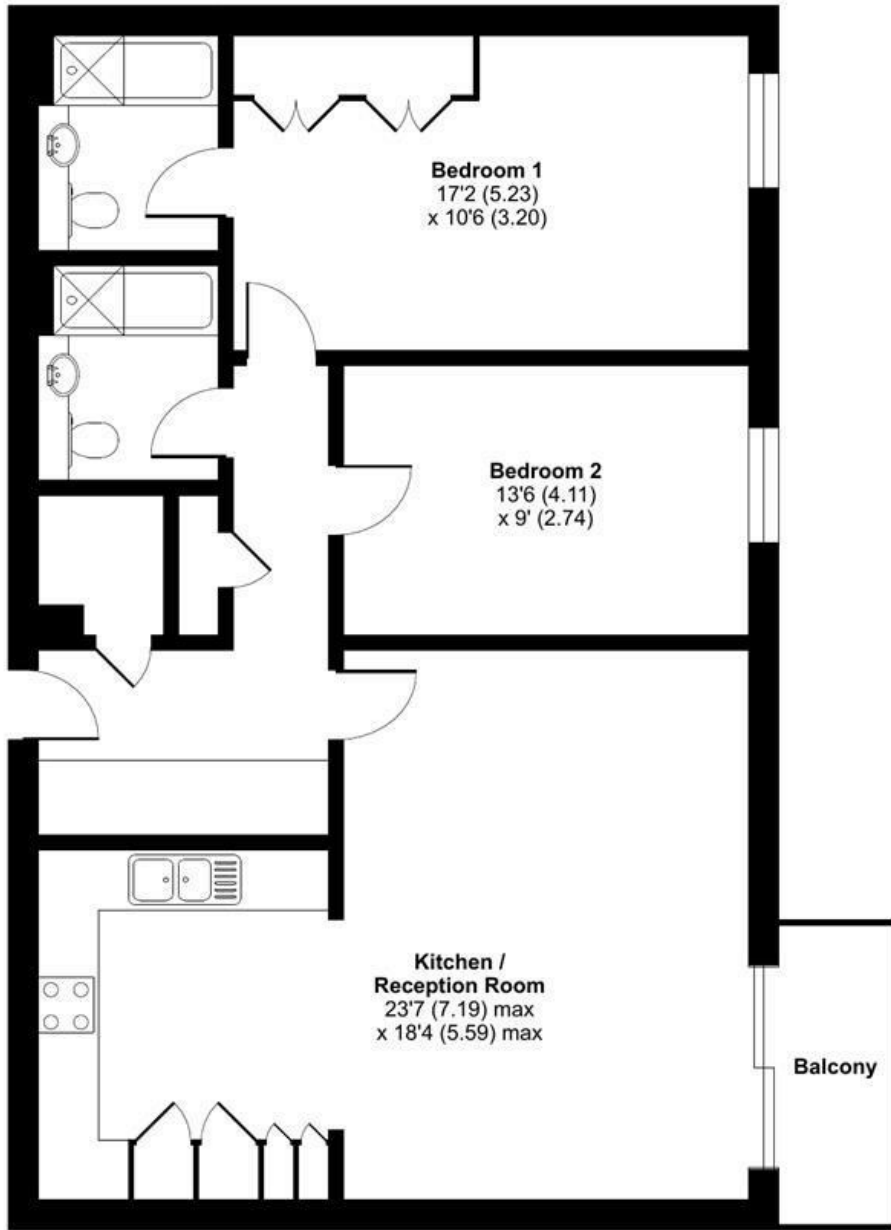
Alex & Matteo
ESTATE AGENTS

£2,100 Per month

Lowry House, Cassilis Road, London, E14

Approximate Area = 919 sq ft / 85.3 sq m

For identification only - Not to scale



SECOND FLOOR



Certified
Property
Measurer

Floor plan produced in accordance with RICS Property Measurement Standards incorporating International Property Measurement Standards (IPMS2 Residential). © nitchcom 2023. Produced for Alex & Matteo Estate Agents. REF: 982044

Energy Efficiency Rating		Current	Potential
Very energy efficient - lower running costs			
(92 plus) A			
(81-91) B		81	84
(69-80) C			
(55-68) D			
(39-54) E			
(21-38) F			
(1-20) G			
Not energy efficient - higher running costs			
England & Wales		EU Directive 2002/91/EC	